

MSRPAC PC Recorder Software Package

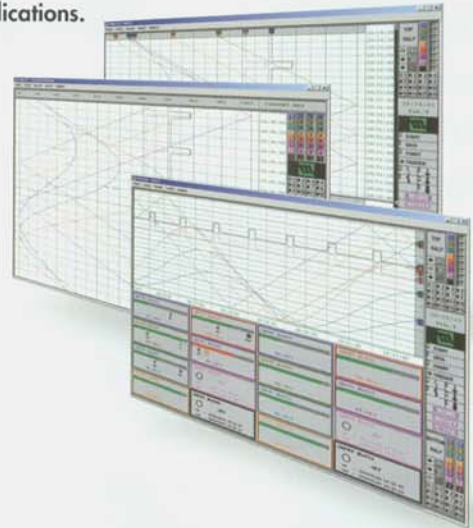
MSRPAC PC Recorder Software Package

MSR128 – Full Featured PC Recorder Software

- Ideal for logging, trending and analyzing continuous process and batch applications.
- Up to 128 channels can be monitored simultaneously.
- Maximum sampling rate of 500 ms for 128 channels.
- High speed sampling 100 ms with R3 series TCP/IP module.
- Four network R1M modules can be polled with remote limit alarming.

The MSR128 works with all PC Recorder modules. The MSR128 software polls data from the input module, plots the value on the screen and stores it to the PC's hard drive. The data is polled, plotted and stored at a maximum rate of 500 ms for 128 channels. Historical trends can be recalled, edited and used to be printed as hard copies or to be exported to spreadsheets for further analysis.

Data can be exported in CSV format to popular spreadsheet software packages such as Microsoft Excel. Data can be directly imported allowing the user to take full advantage of spreadsheet software features.



MSR128LV / MSR128LS – PC Recorder-Light

- Ideal for basic logging and trending purposes
- Maximum sampling rate of 50 ms for 8 channels, 500 ms to 1 minute for the total of 120 channels

The MSR128-Light is designed to operate on a PC of relatively low performance, even a Windows 98 PC, though certain functions of the MSR128 which require the PC's high performance, are not available.

The data used for the recorder is saved in CSV format allowing easy export to other Windows programs such as Microsoft Excel.

Two models are available to run on low resolution screens.

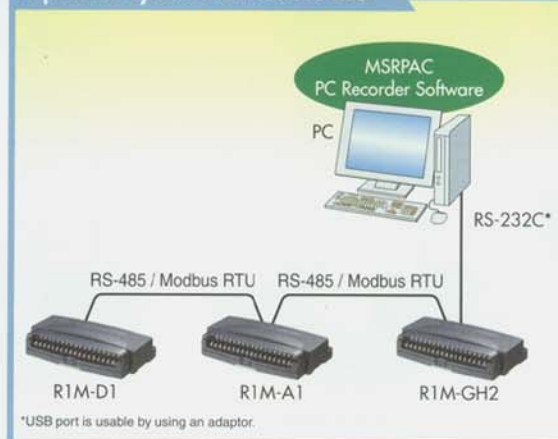
- ◆ MSR128LV for VGA (Screen area: 640 x 480 pixels)
- ◆ MSR128LS for SVGA (Screen area: 800 x 600 pixels)



Minimum Configuration



Expanded System via Modbus RTU



Expanded System via Ethernet

